



Bell
EST 1955

Autumn Explorer

Bell St Albans

13 OCTOBER - 2 NOVEMBER 2024
1 - 3 WEEKS



Project-based learning

Explore the themes and topics

Project themes have been intentionally designed for students and teachers to take their project in a direction that best meets the group's needs and motivations.

This means that every group of students will learn something different with each student receiving a personalised learning experience. This unique aspect of our Explorer courses ensures they are consistently motivating and engaging, and students often return year after year.

Develop language skills

The content of lessons, study tours and activities are designed with a focus on the project theme, giving the students a holistic experience which accelerates their learning.

Create a personal response

Each project has a theme which begins with a central guiding question to start the students on their learning journey. This guiding question focuses the project and the students work collaboratively towards the production of a tangible project outcome which often combines each of the different aspects of the course.

Practise everywhere

Project-based learning on an Explorer programme is a fully-integrated approach to language learning that provides our students with lots of cross-curricular opportunities for learning everywhere, both inside and outside the classroom.

This means that every group of students will learn something different with each student receiving a personalised learning experience. This unique aspect of our Explorer courses ensures they are consistently motivating and engaging, and students often return year after year.

Present at the end-of-course show

The end of the Explorer project gives students the chance to share their learning experiences with each other in the form of a course show (presentation).



Course includes:



Tuition, study materials and course portfolio



Access to sports facilities



Free internet access



Residential accommodation and all meals



Comprehensive supervision by qualified staff



Free laundry service



A full programme of educational and social activities



Transfers to and from designated airports/stations on scheduled arrival and departure days *



Comprehensive insurance



A full programme of study tours

* For arrival and departures between 10am to 5pm or advised train times



WEEK 1:

London Calling




SUNDAY 13 OCTOBER – SATURDAY 19 OCTOBER

This project introduces this group of students to Britain and British culture, specifically by focusing on London as the study tour destination. Students will deepen their understanding of English language and culture while exploring iconic landmarks such as the London Eye.

Example learning outcomes

- Students will learn key vocabulary related to London landmarks, British culture, and travel experiences and learn how to accurately use comparative and superlative forms for comparing and contrasting lifestyle in London to their home countries.
- Students will improve fluency and confidence in conversational English through immersive language practice during guided tours and cultural activities.
- Students will develop their cross-cultural understanding and communication skills.

Topics may include:

-  Sociology
-  Geography
-  History and Architecture

Types of activities could include:

- Collaborative multimedia presentations showcasing students' research on London's cultural diversity, historical significance, and contemporary relevance.
- A travel guide/vlog on London promoting London as a must-visit destination, incorporating language skills and cultural knowledge gained during the course.
- A short documentary video on famous London landmarks and accompanying quiz.

Week includes:

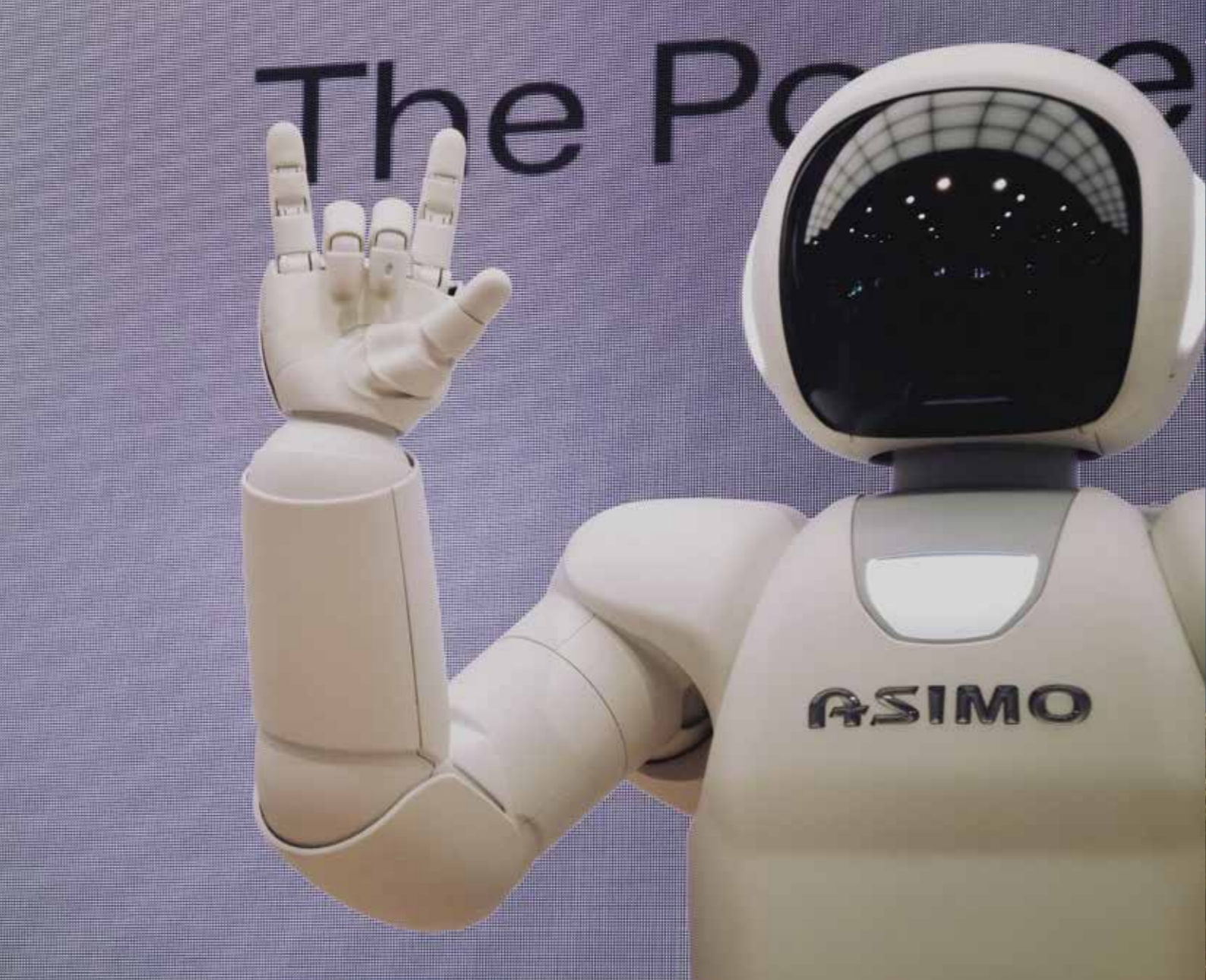
Study Tour: London

- London Eye

Excursion: Cambridge

- Kings College





WEEK 2:

Incredible Inventions

SUNDAY 20 OCTOBER – SATURDAY 26 OCTOBER

This project will focus on some of the most important and influential scientific developments in human history. Students will investigate groundbreaking inventions and discoveries while also delving into the most innovative applications of science in solving crimes. By engaging in hands-on activities and collaborative projects, students will enhance their language skills while gaining a deeper understanding of the role of science in modern society.

Example learning outcomes

Students will learn vocabulary related to scientific concepts, inventions, and learn to accurately use past modals to speculate about the actions of suspects and to make deductions about the sequence of events leading up to a crime.

Students will improve their ability to comprehend and analyze complex scientific texts, including academic articles and forensic reports.

Students will develop and apply logical reasoning and analytical skills to evaluate evidence and solve problems in both historical and contemporary contexts and learn to demonstrate flexibility and resilience in navigating unexpected challenges and uncertainties encountered during scientific inquiry and problem-solving.

Topics may include:

- Forensic Science
- Ethics
- History

Types of activities could include:

- Role-playing activities simulating crime scene investigations, where students analyze evidence, conduct experiments, and formulate hypotheses to solve a fictional murder mystery.
- Carrying out collaborative research projects exploring the contributions of diverse cultures and individuals to scientific innovation throughout history.
- Carrying out discussions on the history of key inventions, such as the printing press, electricity, and the internet.

Week includes:

Study Tour: London

- Science Museum

Excursion: Oxford

- Punting





WEEK 3:

Dynamic Discoveries

SUNDAY 27 OCTOBER – SATURDAY 2 NOVEMBER

This project opens the students' eyes to the world by learning about great adventurers and explorers. Students will also be encouraged to explore Britain and discover as much as they can throughout their experience in the UK. Through a variety of engaging activities, students will enhance their language skills, critical thinking abilities, and intercultural competence.

Example learning outcomes

Students will expand vocabulary related to the topics of adventure, exploration, and geographical landmarks and will learn to accurately use past, present, and future tenses accurately when recounting historical events, describing current experiences, and discussing future plans. They will learn how to accurately use modal verbs to express possibility, necessity, obligation, and ability in hypothetical scenarios and discussions about potential future adventures.



Students will effectively use functional language to express ideas clearly and persuasively in both written and verbal forms.



Students will learn to appreciate diverse perspectives and understanding the interconnectedness of global history and culture.



Types of activities could include:




- Designing and building a 3-D model of a colony on another planet.
- Role-playing activities simulating the challenges faced by explorers, fostering teamwork and problem-solving skills.
- Planning an expedition to a remote part of the world and /or return visit to the UK.

Week includes:

Study Tour: London

- The British Museum

Topics may include:

-  Sciences
-  Literature
-  History & Geography





Bell St Albans

Discover the English language through active, academic and creative activities in a beautiful and friendly school - all year round.

This elegant Victorian building, with its traditional courtyard garden, is set within 60 acres of English countryside, providing a safe and peaceful environment.

Courses available:

- Winter Explorer
- Spring Explorer
- Summer Explorer
- Autumn Explorer

Sample educational activities

- Arts and crafts
- British sports
- Football
- Journalism
- Health and fitness

Facilities

- Bright, spacious classrooms, many with interactive whiteboards
- Free wireless internet
- Dining room
- Art room
- Disabled access/facilities
- On-site sports fields
- Peaceful, countryside setting

Accommodation

- Twin rooms and dormitories
- Separate accommodation blocks for boys and girls
- A dedicated houseparent in every boarding house

Please note, we are unable to guarantee any room requests as the room allocation can change from programme to programme

Course fees

Our course fees are fully-inclusive, including tuition, accommodation, airport transfers and learning materials - so everything is taken care of before your student arrives.

WEEK	THEME	ARRIVAL DATE	DEPARTURE DATE	COURSE LENGTH			
				3 WEEKS	2 WEEKS	2 WEEKS	1 WEEK
1	London Calling	Sunday 13 October	Saturday 19 October				1 WEEK
2	Incredible Inventions	Sunday 20 October	Saturday 26 October	3 WEEKS	2 WEEKS		1 WEEK
3	Dynamic Discoveries	Sunday 27 October	Saturday 2 November			2 WEEKS	1 WEEK
TOTAL (£)				3,180	2,120	2,120	1,060

* In addition to course fees, all bookings are subject to a £95 registration fee

For more information:



Visit our website
bellenglish.com



Contact us
Call +44 (0)1223 275598



In your own country
Get in touch with your local
Bell representative

